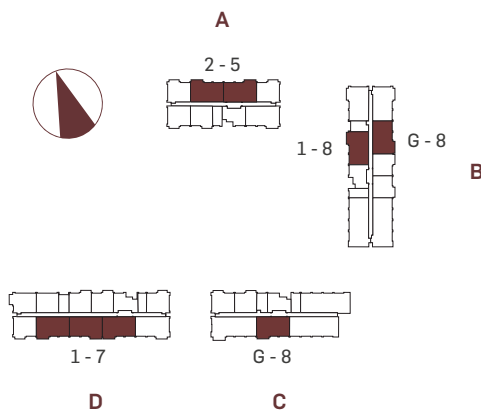
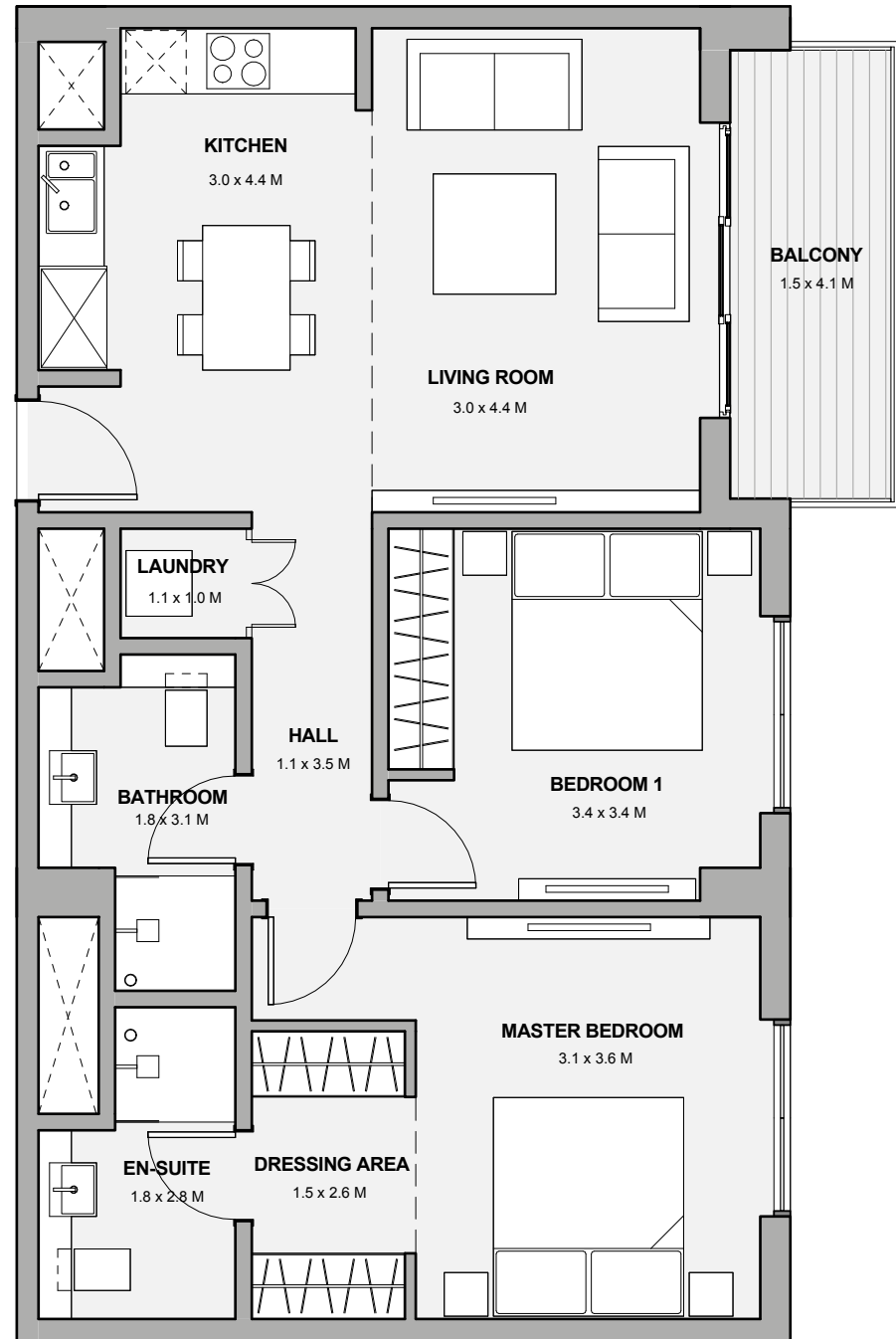


# MARASSI BOULEVARD

## TWO BEDROOM TYPE 01

SUITE AREA	76.8 sqm
BALCONY AREA	6.2 sqm
TOTAL AREA	83.0 sqm

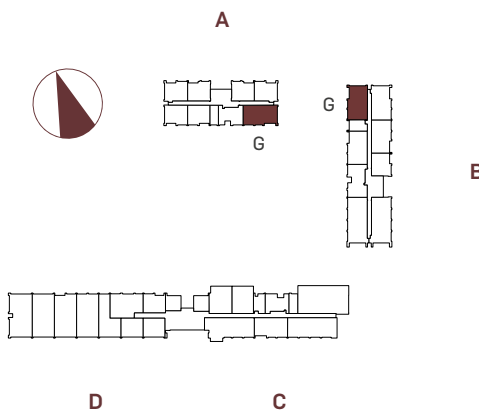
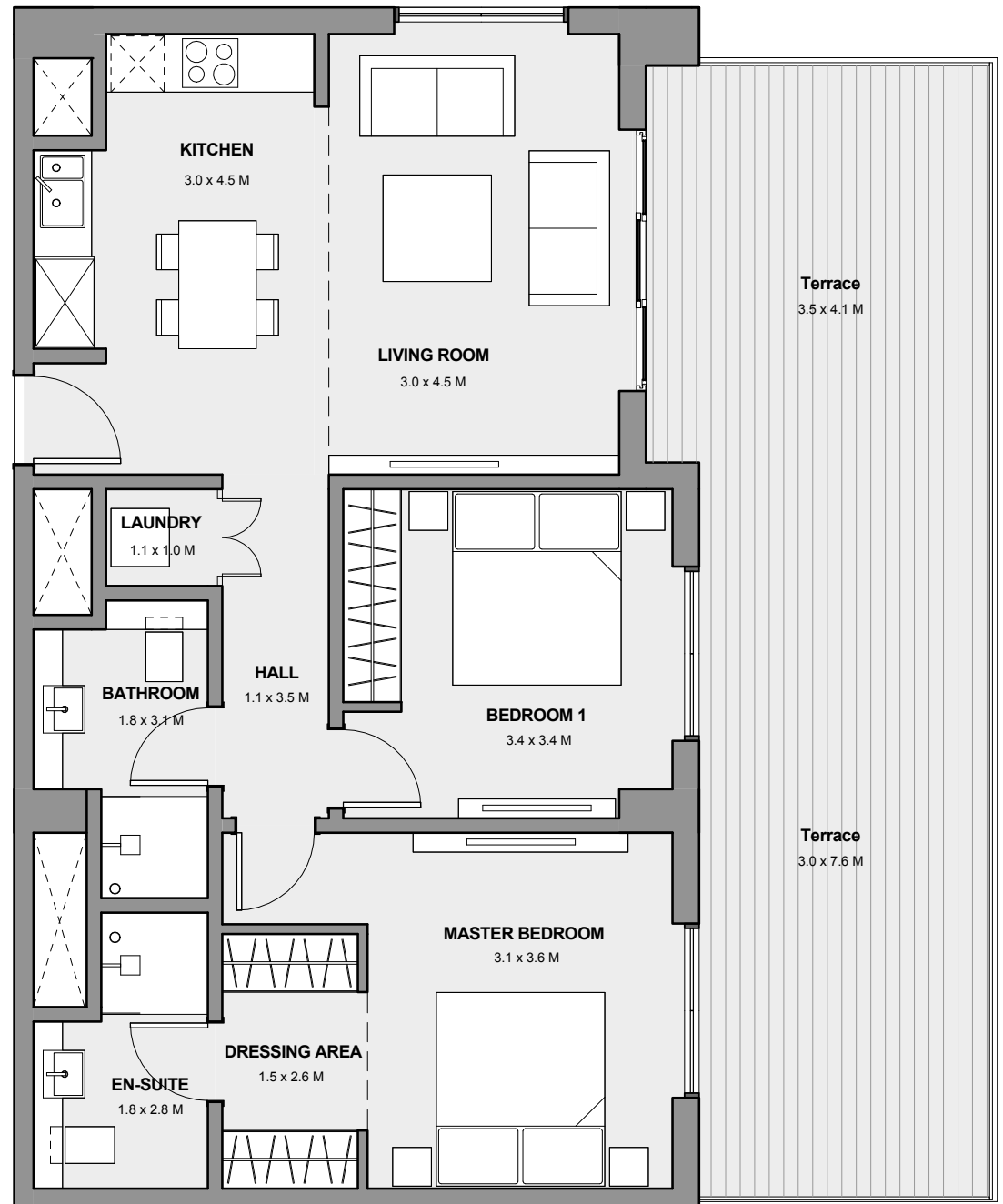


Disclaimer: 1. All room dimensions are measured to structural elements and exclude all finishes and construction tolerances. 2. All dimensions have been provided by our consultant architects. 3. All materials, dimensions and drawings are approximate. Information is subject to change without notice. 4. The attached plans are for marketing purposes only. Actual suite area may vary from the stated area. Drawings not to scale. The developer reserves the right to make revisions. 5. The suite area is measured as the area bounded by the centrelines of demising of party walls separating one unit from another unit, the centreline surface of the exterior walls, and the centreline surface of the corridor wall enclosing and abutting the Unit. 6. The balcony area is measured as the area bounded by the inner face of a solid masonry demising or party walls separating one unit from another unit, the centreline of the enclosing guard and the centreline of the suite abutting the balcony. Where a balcony is split to service two adjacent units and the split is constructed using a glazed panel, the balcony area of each unit is measured to the centreline of the glazed panel. 7. The units are measured at typical floor in the building. Columns may vary in size depending on the floor level. 8. The attached plans are for marketing purposes.

# MARASSI BOULEVARD

## TWO BEDROOM TYPE 02

SUITE AREA	78.1 sqm
BALCONY AREA	36.6 sqm
TOTAL AREA	114.7 sqm

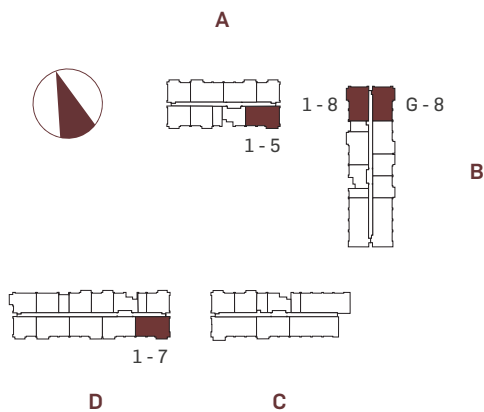
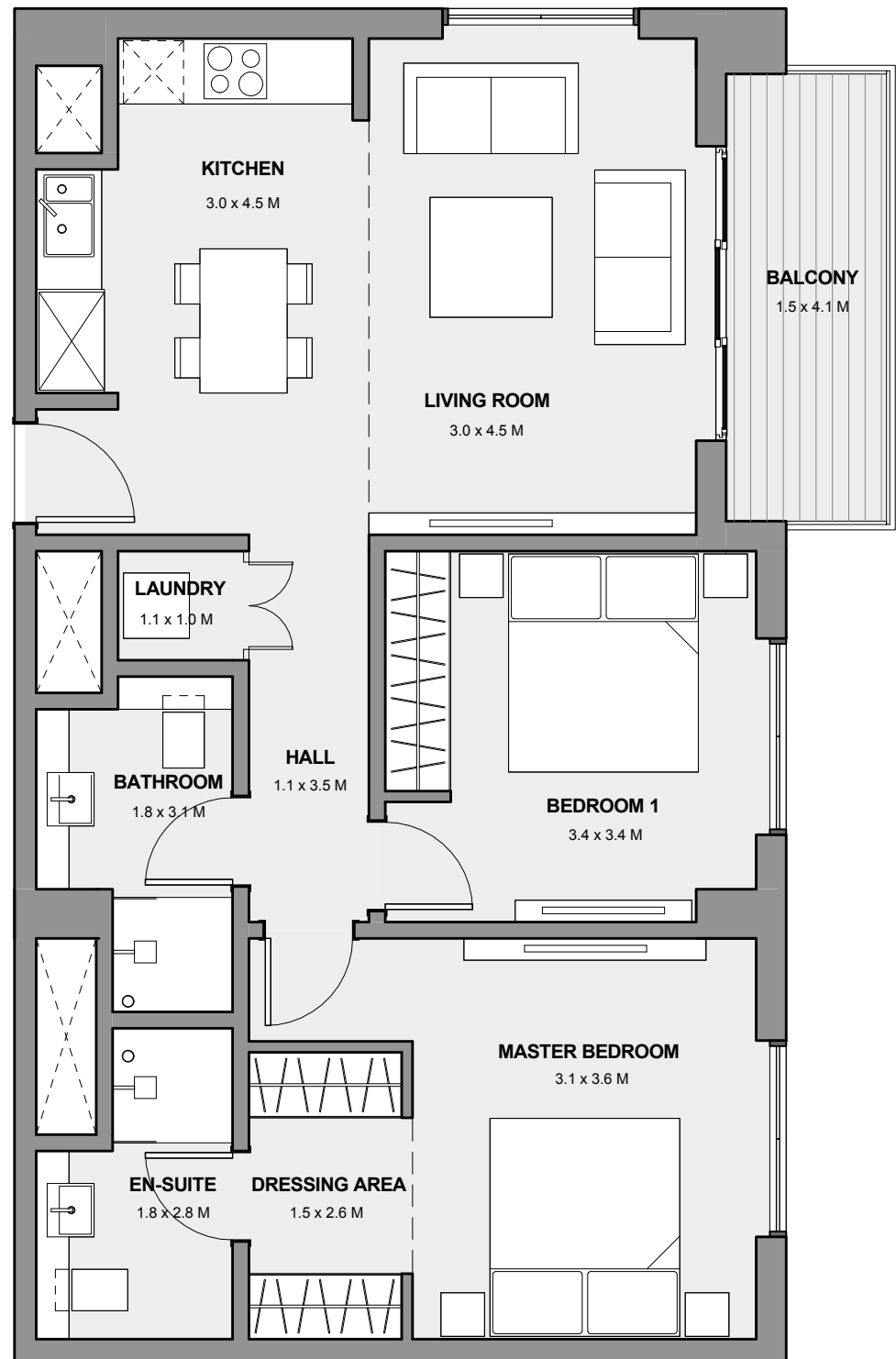


Disclaimer: 1. All room dimensions are measured to structural elements and exclude all finishes and construction tolerances. 2. All dimensions have been provided by our consultant architects. 3. All materials, dimensions and drawings are approximate. Information is subject to change without notice. 4. The attached plans are for marketing purposes only. Actual suite area may vary from the stated area. Drawings not to scale. The developer reserves the right to make revisions. 5. The suite area is measured as the area bounded by the centrelines of demising of party walls separating one unit from another unit, the centreline surface of the exterior walls, and the centreline surface of the corridor wall enclosing and abutting the Unit. 6. The balcony area is measured as the area bounded by the inner face of a solid masonry demising or party walls separating one unit from another unit, the centreline of the enclosing guard and the centreline of the suite abutting the balcony. Where a balcony is split to service two adjacent units and the split is constructed using a glazed panel, the balcony area of each unit is measured to the centreline of the glazed panel. 7. The units are measured at typical floor in the building. Columns may vary in size depending on the floor level. 8. The attached plans are for marketing purposes.

# MARASSI BOULEVARD

## TWO BEDROOM TYPE 03

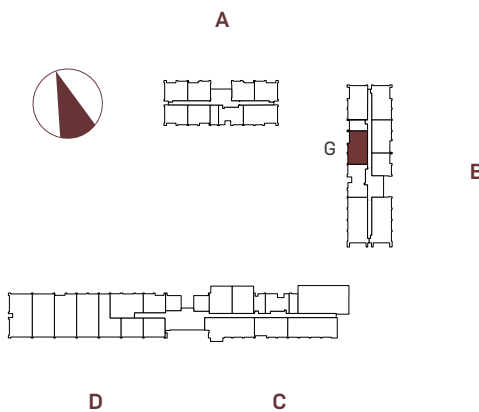
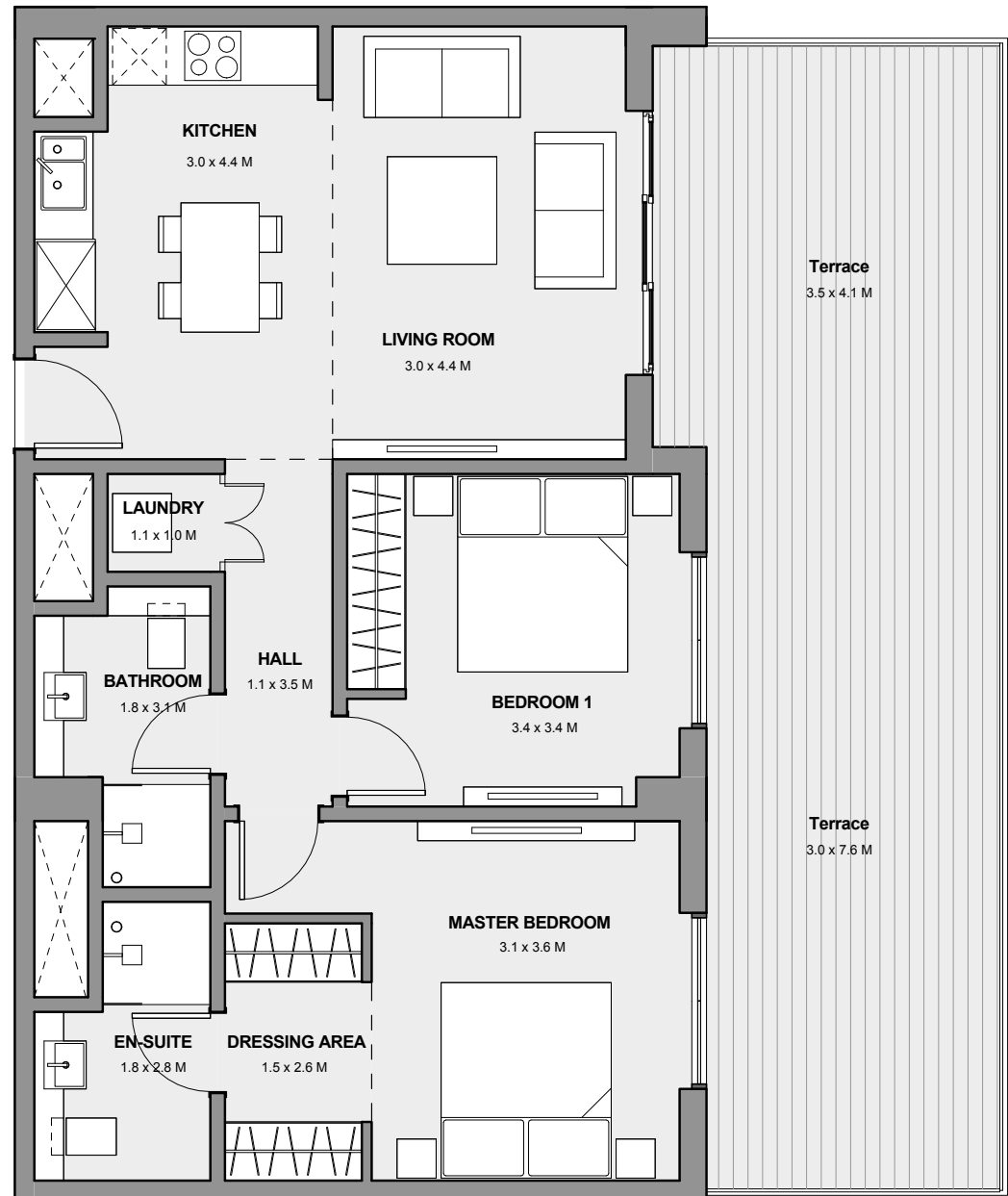
SUITE AREA	78.0 sqm
BALCONY AREA	6.1 sqm
TOTAL AREA	84.1 sqm



# MARASSI BOULEVARD

## TWO BEDROOM TYPE 04

SUITE AREA	77.0 sqm
BALCONY AREA	37.0 sqm
TOTAL AREA	114.0 sqm

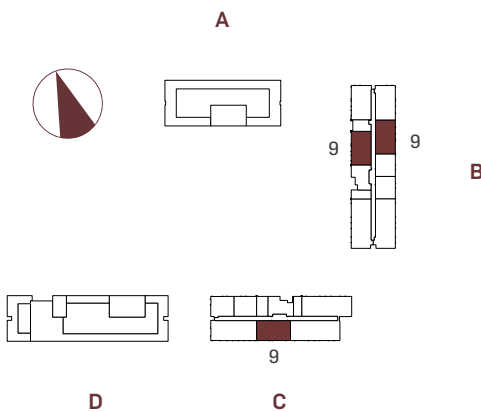
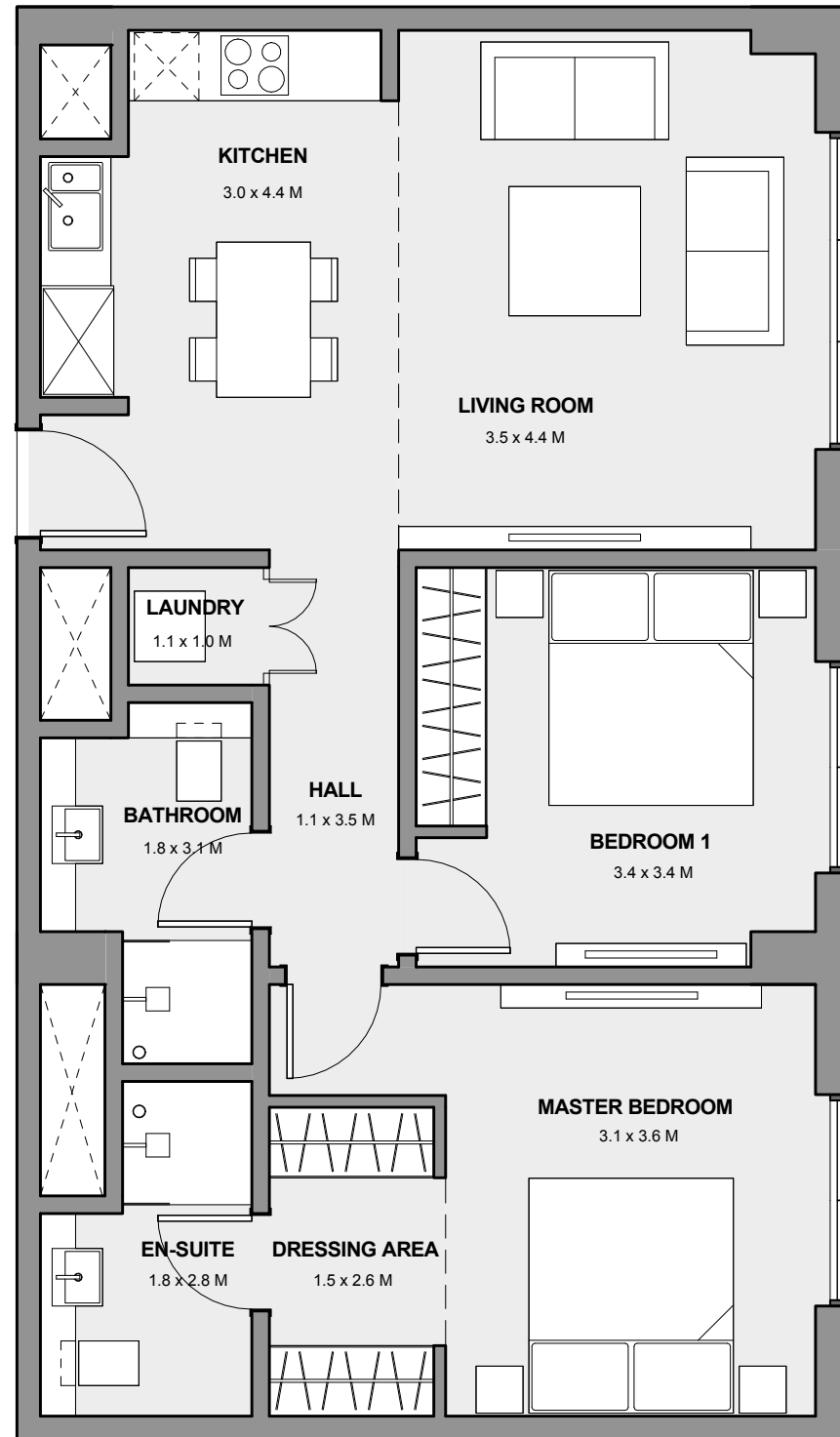


Disclaimer: 1. All room dimensions are measured to structural elements and exclude all finishes and construction tolerances. 2. All dimensions have been provided by our consultant architects. 3. All materials, dimensions and drawings are approximate. Information is subject to change without notice. 4. The attached plans are for marketing purposes only. Actual suite area may vary from the stated area. Drawings not to scale. The developer reserves the right to make revisions. 5. The suite area is measured as the area bounded by the centrelines of demising of party walls separating one unit from another unit, the centreline surface of the exterior walls, and the centreline surface of the corridor wall enclosing and abutting the Unit. 6. The balcony area is measured as the area bounded by the inner face of a solid masonry demising or party walls separating one unit from another unit, the centreline of the enclosing guard and the centreline of the suite abutting the balcony. Where a balcony is split to service two adjacent units and the split is constructed using a glazed panel, the balcony area of each unit is measured to the centreline of the glazed panel. 7. The units are measured at typical floor in the building. Columns may vary in size depending on the floor level. 8. The attached plans are for marketing purposes.

# MARASSI BOULEVARD

## TWO BEDROOM TYPE 09

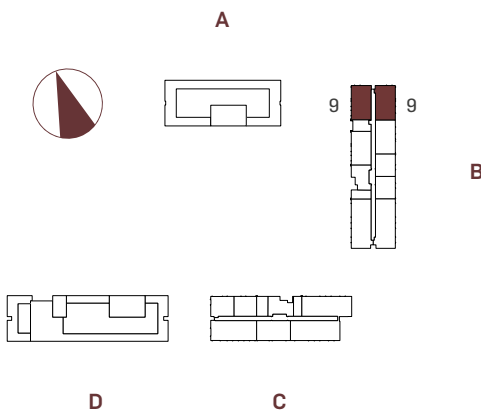
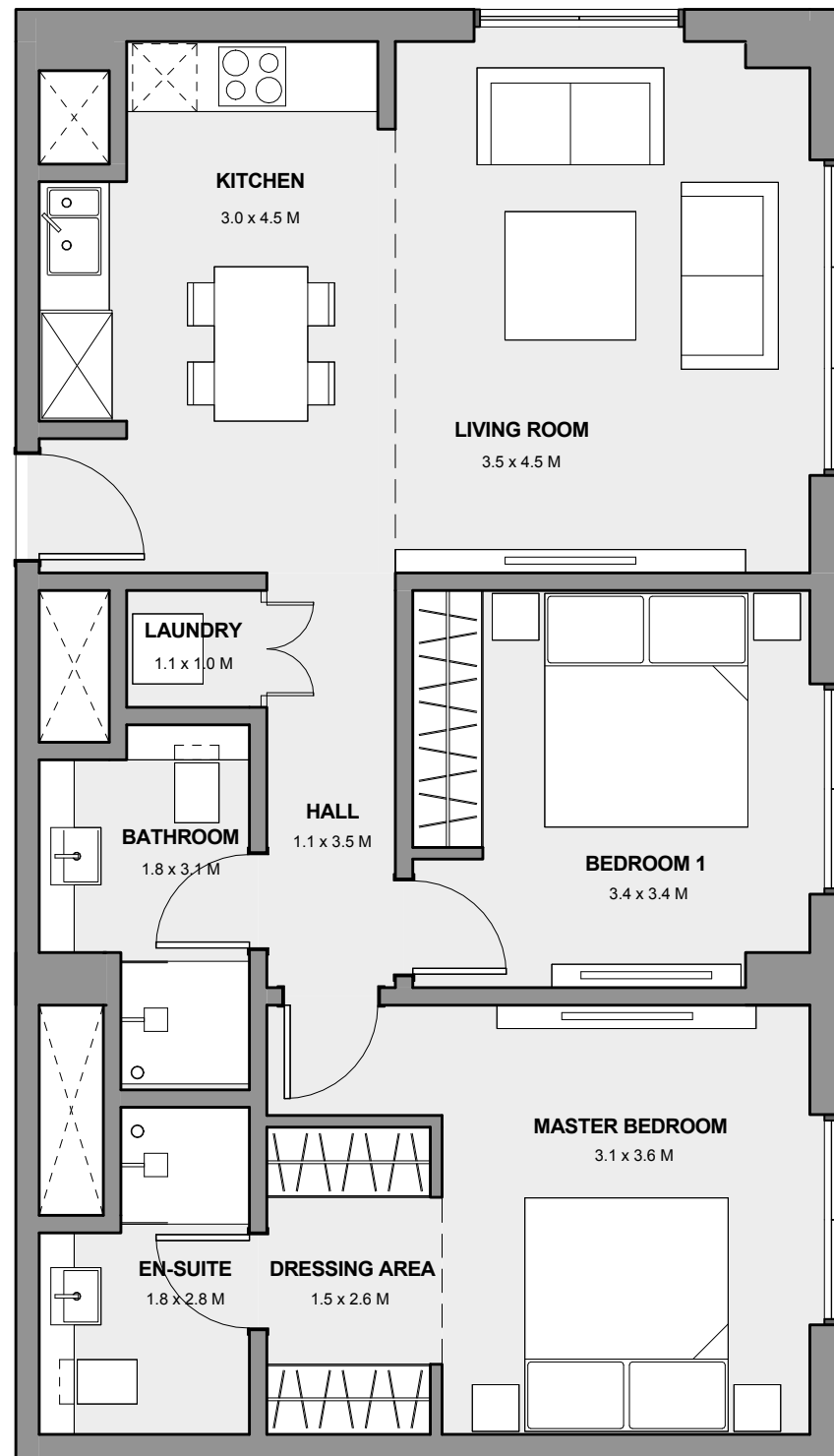
SUITE AREA	79.1 sqm
BALCONY AREA	0.0 sqm
TOTAL AREA	79.1 sqm



# MARASSI BOULEVARD

## TWO BEDROOM TYPE 10

SUITE AREA	80.5 sqm
BALCONY AREA	0.0 sqm
TOTAL AREA	80.5 sqm



Disclaimer: 1. All room dimensions are measured to structural elements and exclude all finishes and construction tolerances. 2. All dimensions have been provided by our consultant architects. 3. All materials, dimensions and drawings are approximate. Information is subject to change without notice. 4. The attached plans are for marketing purposes only. Actual suite area may vary from the stated area. Drawings not to scale. The developer reserves the right to make revisions. 5. The suite area is measured as the area bounded by the centrelines of demising or party walls separating one unit from another unit, the centreline surface of the exterior walls, and the centreline surface of the corridor wall enclosing and abutting the Unit. 6. The balcony area is measured as the area bounded by the inner face of a solid masonry demising or party walls separating one unit from another unit, the centreline of the enclosing guard and the centreline of the suite abutting the balcony. Where a balcony is split to service two adjacent units and the split is constructed using a glazed panel, the balcony area of each unit is measured to the centreline of the glazed panel. 7. The units are measured at typical floor in the building. Columns may vary in size depending on the floor level. 8. The attached plans are for marketing purposes.